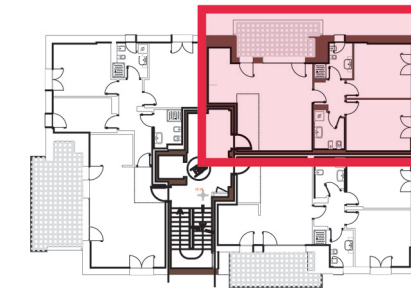
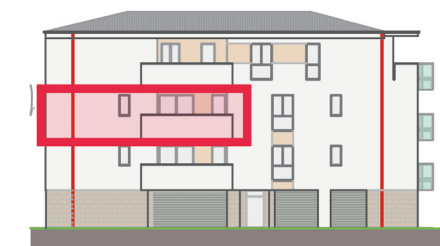




PIANTA PIANO PRIMO



PLANIMETRIA



PROSPETTO

Via Morbidina B25  
Carpi (MO)

**LOTTO 3**

Piano Secondo

**Alloggio 5**

Rev.1 27/06/25 Form. A3 Scala 1:50

Verifica Tommaso Gualdi  
Approvazione Luca Raimondi

Committente e Costruttore

